

SPECIFICATIONS

CHARACTERISTICS	FREQUENCY (GHz)			
	.5-4			
MAX. INS LOSS (dB)	1.6			
MIN. ISOLATION (dB)	60			
MAX. VSWR (on)	1.5			

Switching Speed: (10% to 90% RF) 50 ns, Max.
 (90% to 10% RF) 50 ns, Max.

RF Power: +20 dBm, Max.

Control: TTL compatible, one "unit load"
 4 individual controls

Power Requirements: +5V @ 200 mA, Max.
 -5V @ 50 mA, Max.

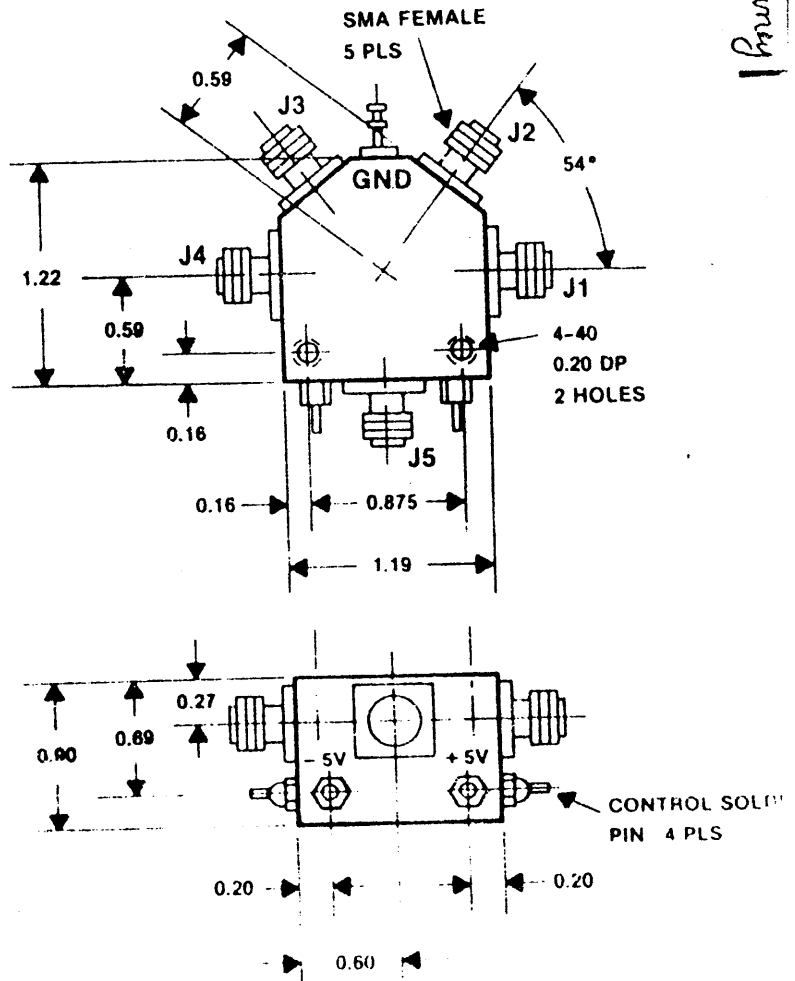
Connectors: RF: SMA Female

Power: RFI Solder Pin

Control: Solder Pin

Options: 001 RF Male SMA Connectors

MECHANICAL DATA



SCALE	A	DRAWING NO.	100-1580
	SIZE		
AMERICAN MICROWAVE CORPORATION FREDERICK, MARYLAND 21701			
OUTLINE AND SPECIFICATIONS SW-0540-4A .5 - 4 GHz			